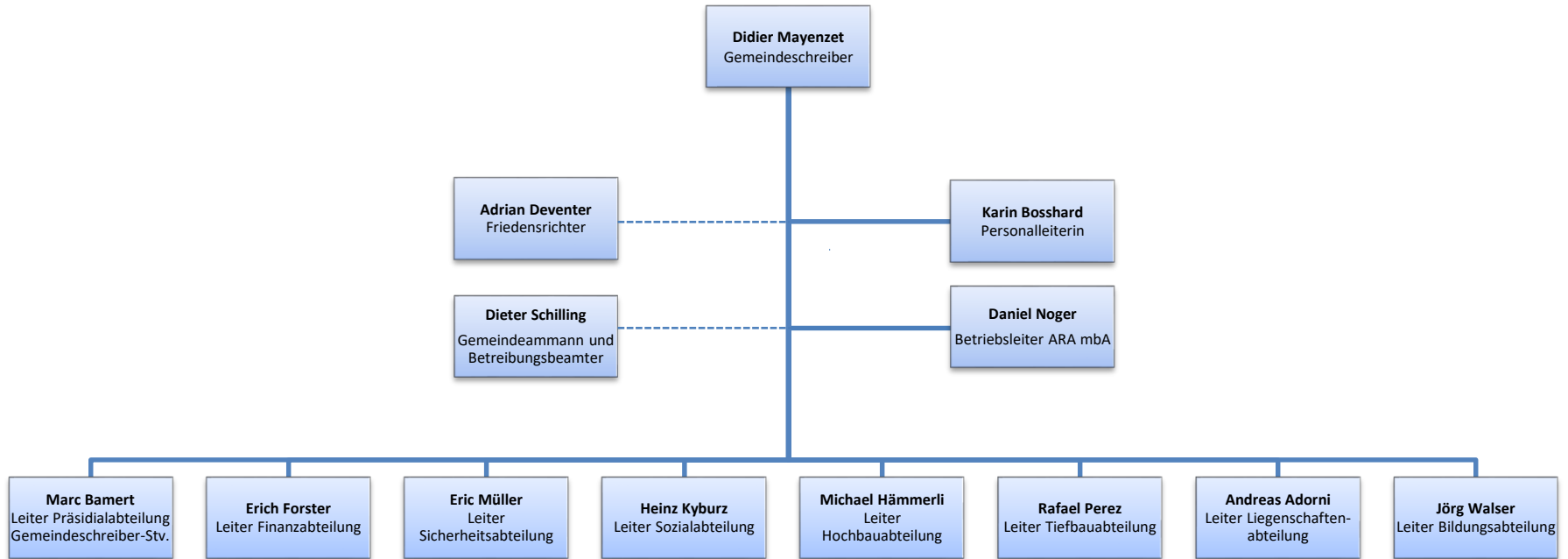


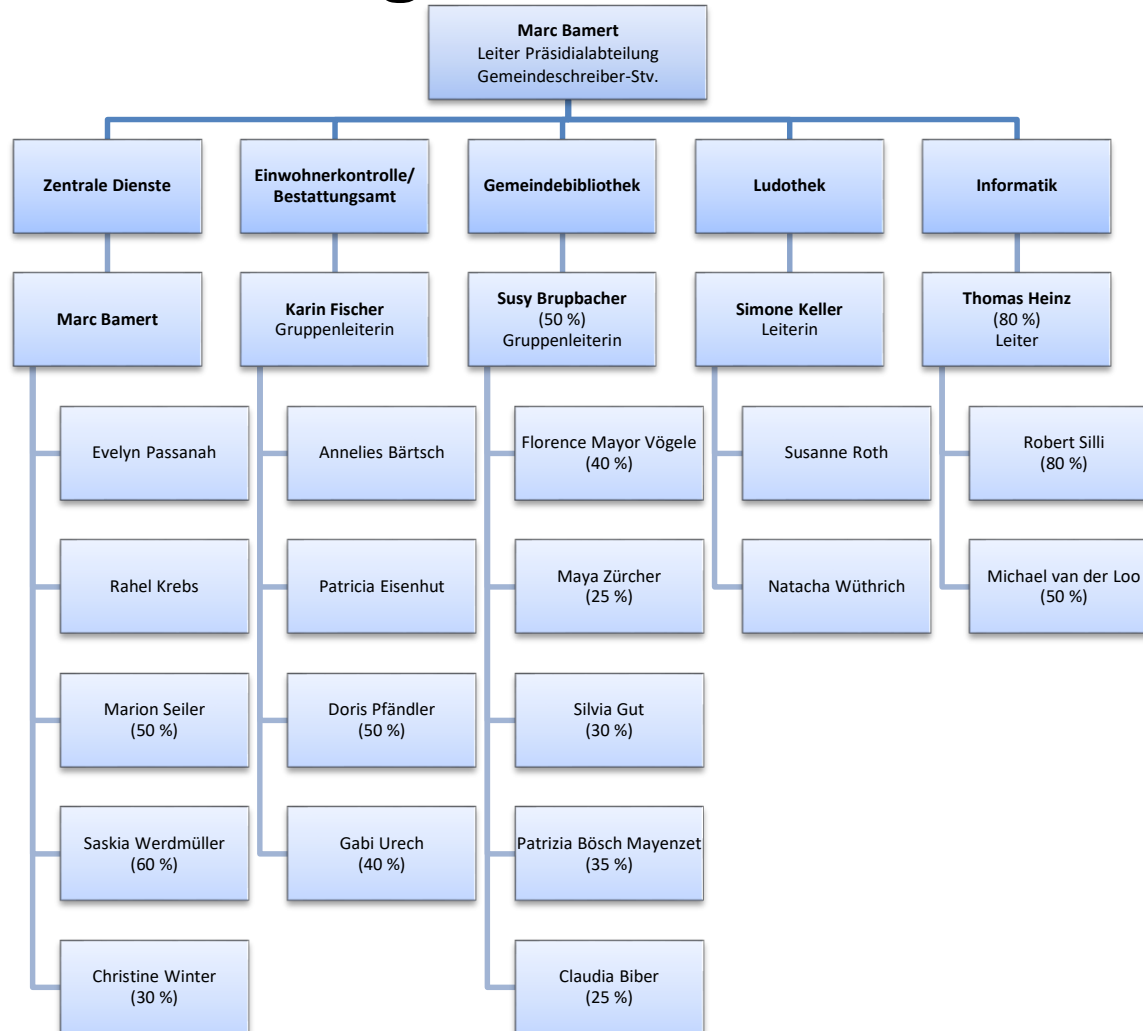
Organigramm Gemeindeverwaltung Meilen

Gültig ab: 1. März 2019

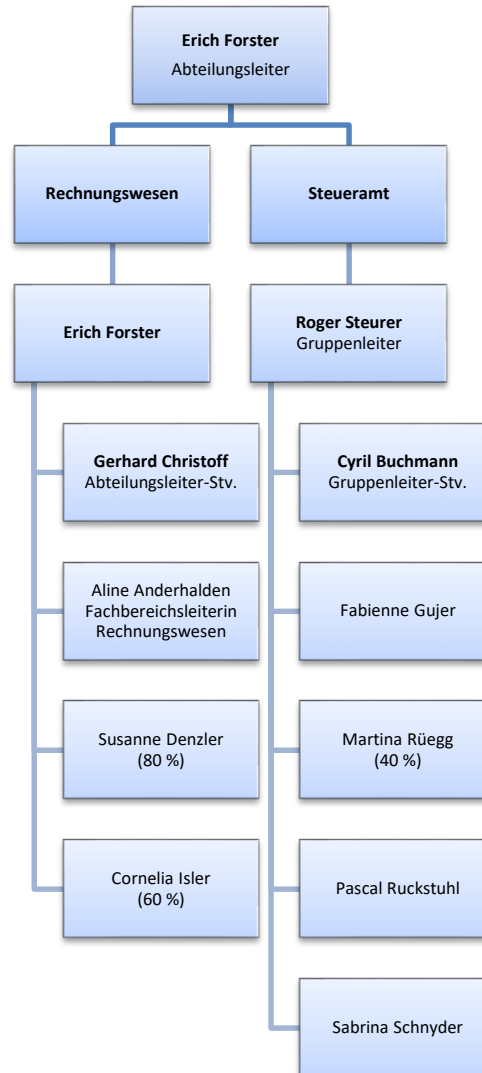
Übersicht



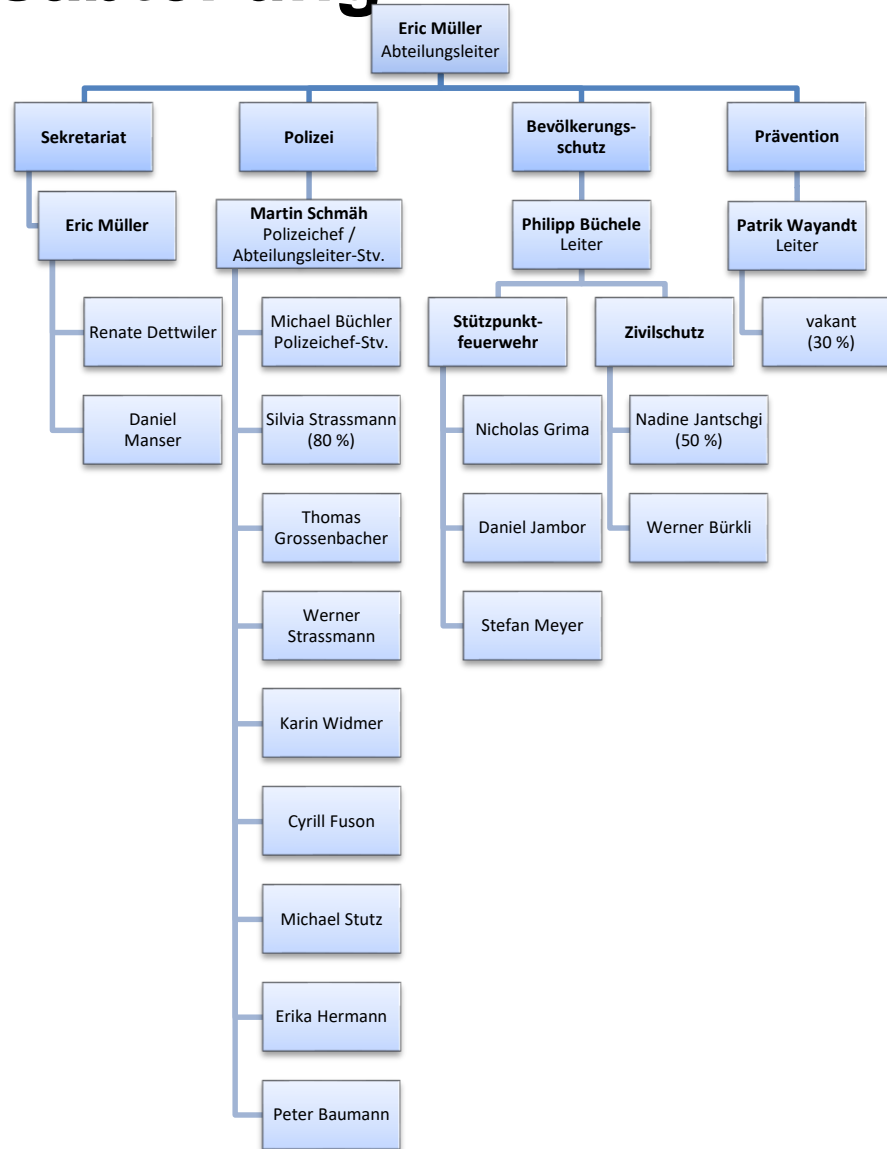
Präsidialabteilung



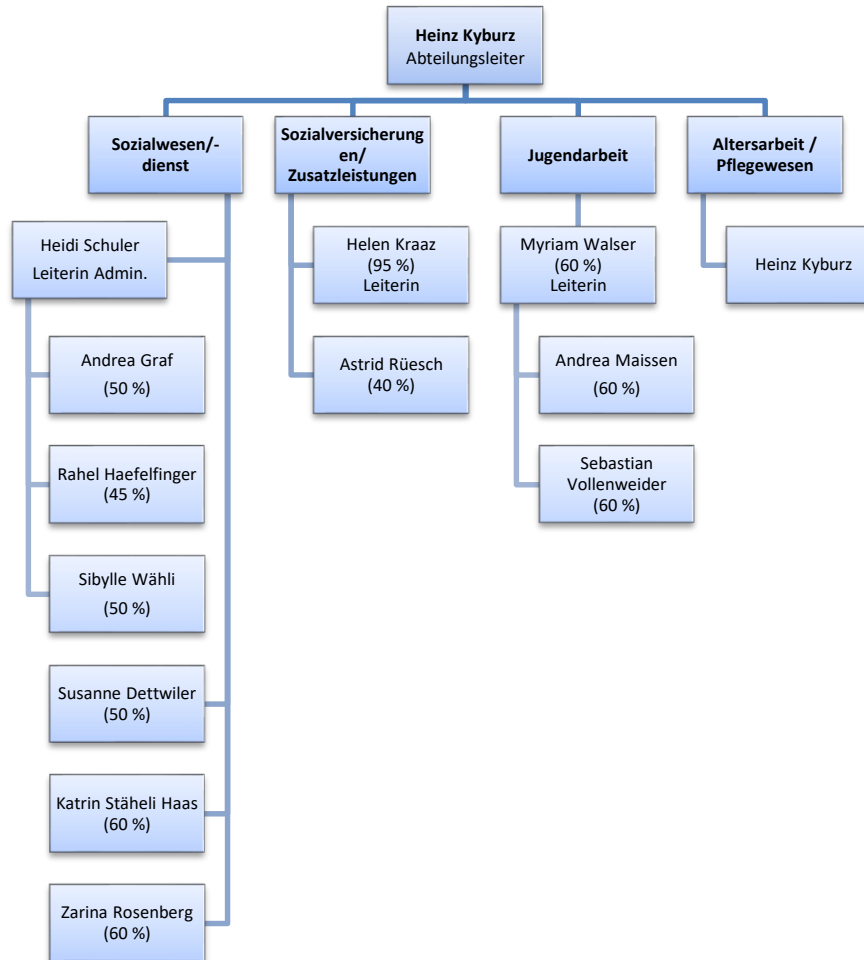
Finanzabteilung



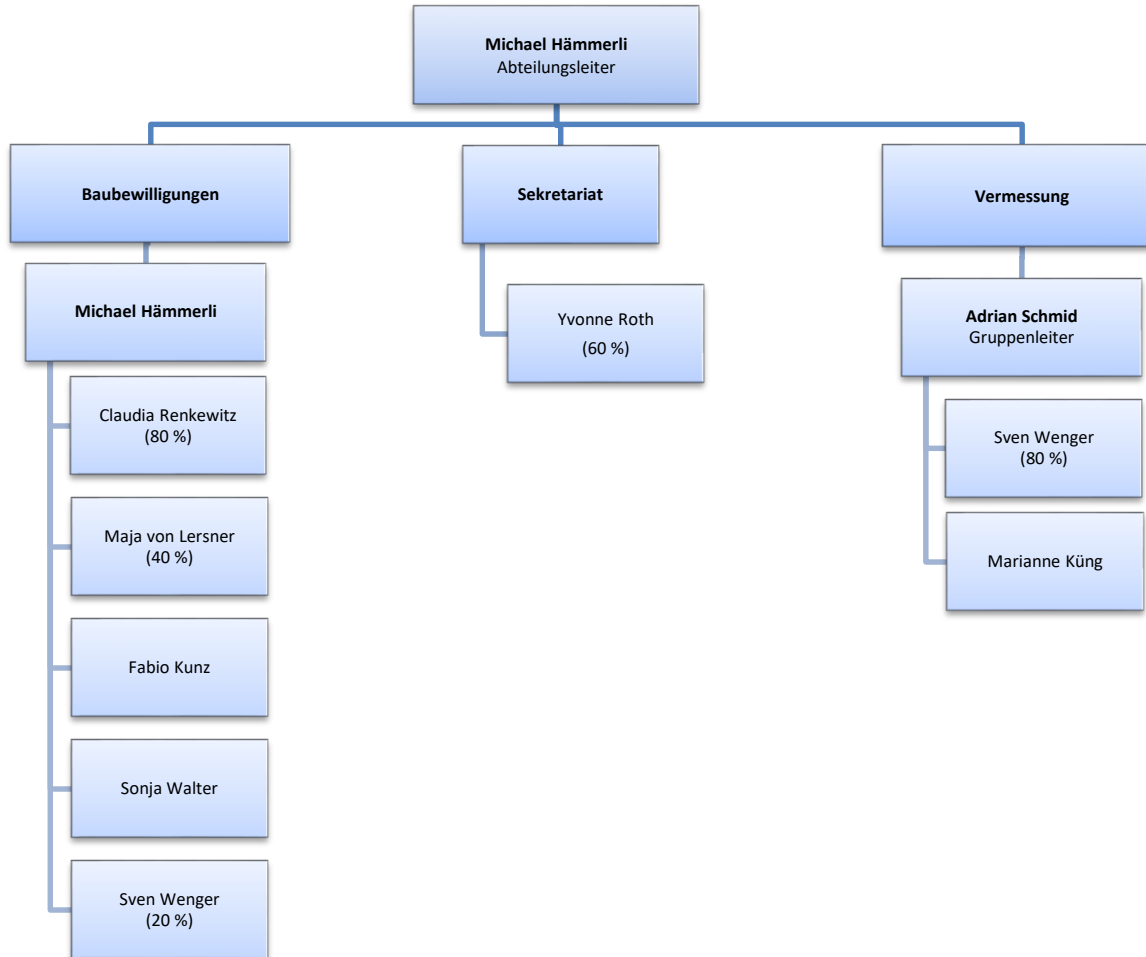
Sicherheitsabteilung



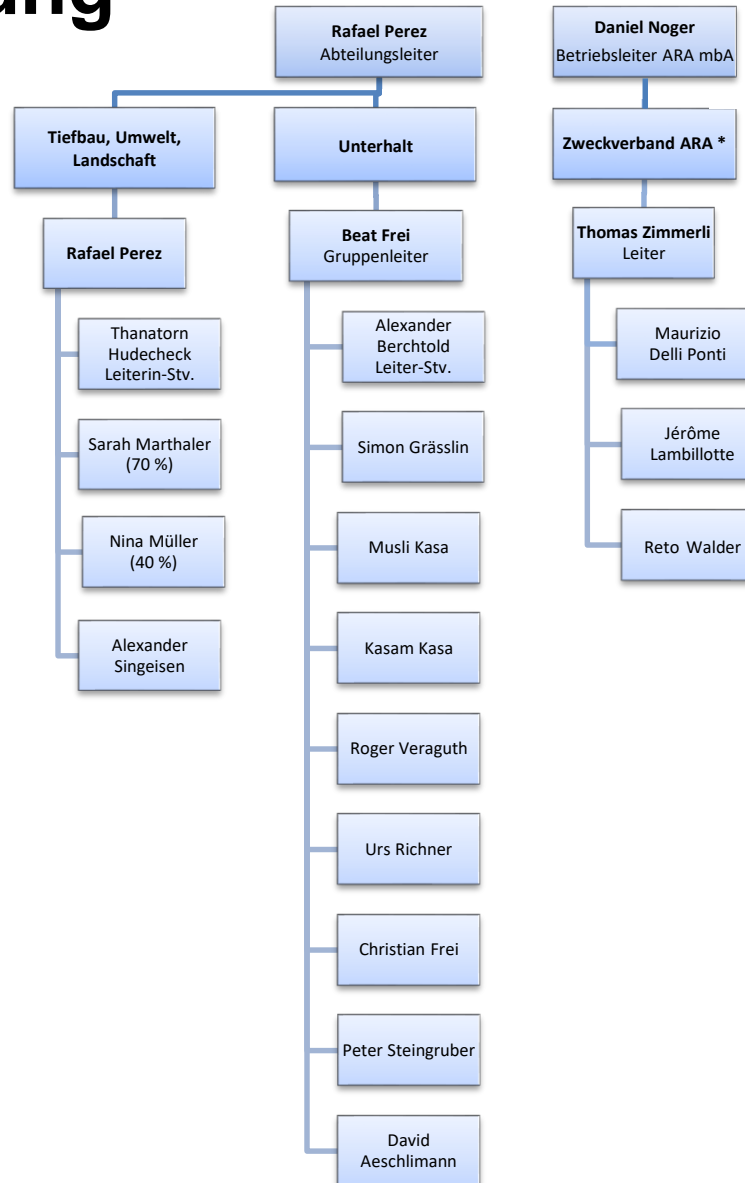
Sozialabteilung



Hochbauabteilung

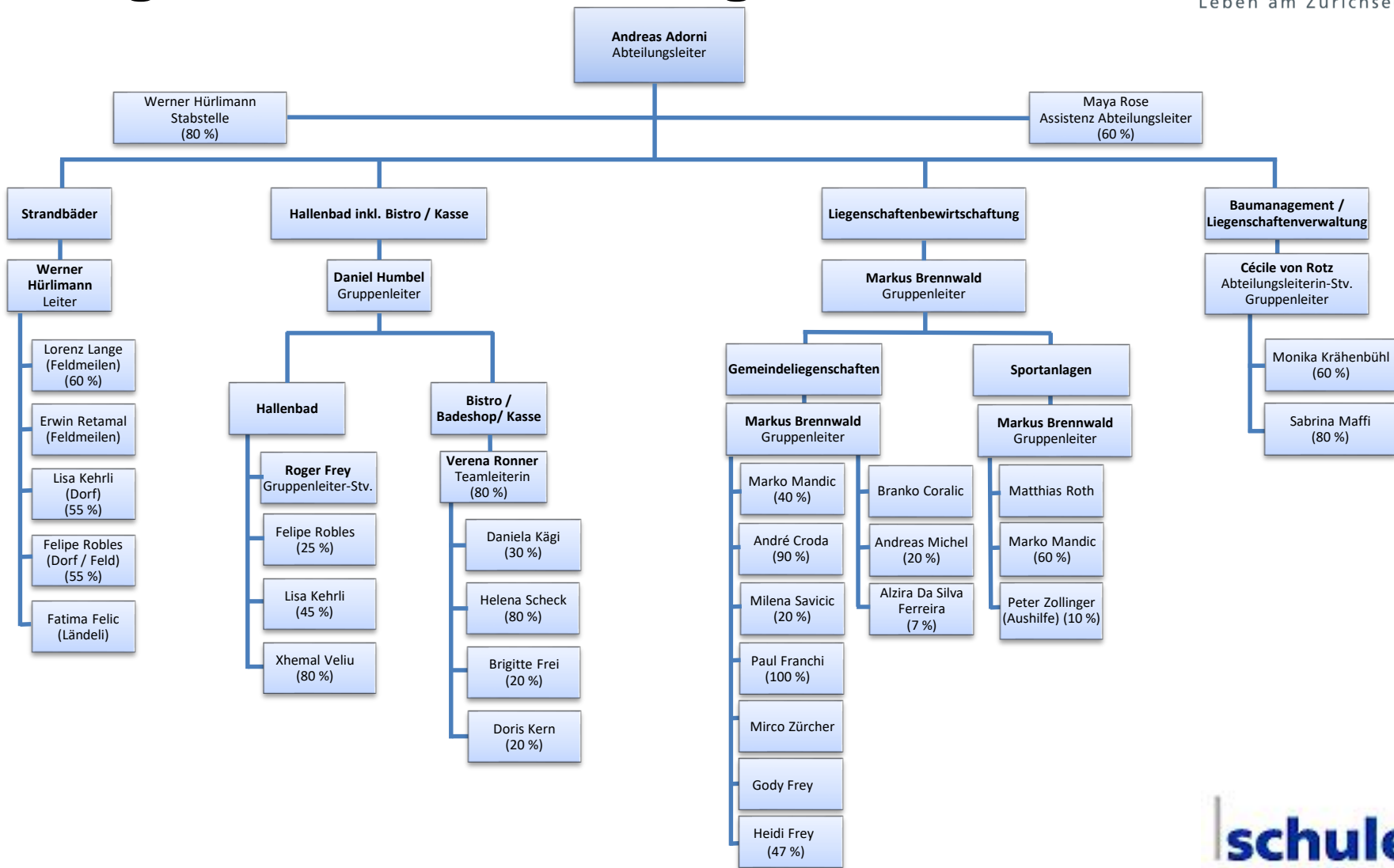


Tiefbauabteilung

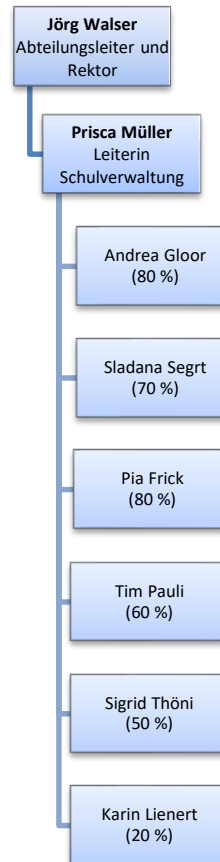


* administrative Angliederung

Liegenschaftsabteilung

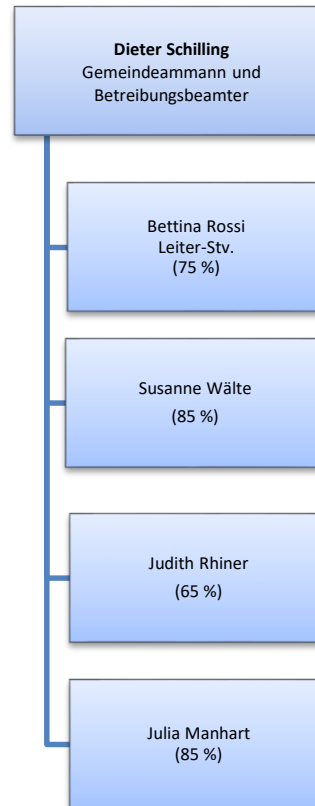


Bildungsabteilung



Gemeindeammann- und Betriebsamt

Zuständig für die Gemeinden Meilen, Herrliberg und Erlenbach



Personaldienst

